

See these and other quick and easy sewing projects in our eBook, [Simple Sewing Projects: 16 Easy Sewing Projects for Beginners](#).

## In this preview, you will find:

Reversible Library Tote .....	1
Adorable Hooded Baby Towel .....	12

### Reversible Library Tote

[Jane from Maiden Jane](#)

One of the perks of sewing your own pieces is that you can maximize their functionality. This Reversible Library Tote essentially gives you two bags in one, thanks to its reversible designs. Prepare to learn how to apply interfacing, make a fabric tube, and top-stitch from these detailed instructions. Plus, there's no need to stress over which fabric to feature in your sewing project because this pattern lets you have both.



**Materials:**

- ½ Yard canvas fabric, 45" wide
- ½ Yard of coordinating canvas fabric for lining, 45" wide
- 2/3 Yard Interfacing
- Tube Turning Tool
- Thread

**Directions:**

\* Use 1/4" seam allowance.

1. Cut Fabric: Fold fabric so that the selvages meet at the top.



2. Mark the fabric at 13 ½ inches wide.



3. Mark the fabric 16 inches from the fold. Connect marks to create a rectangle and cut out the fabric.



4. Use this folded fabric piece as your pattern for the contrasting lining piece and cut. You should now have two rectangles, each 13 ½" x 32".



5. Tip: If you plan to make a lot of these bags, make a simple pattern using pattern fabric (as shown in this photo), wax paper, or freezer paper.



6. Cut two rectangles for the handles: each  $3\frac{3}{4}$ " X width of fabric (in most cases  $22\frac{1}{2}$ ").
7. Interface the handles. This provides stability for the handles so that they don't crinkle up too easily.
8. Cut the interfacing using the handles as a pattern.



9. Trim a  $\frac{1}{4}$ " from one short side and one long side of the interfacing. This will help prevent getting interfacing on your ironing board.



10. Follow the manufacturer's instructions to apply the interfacing. You can use a damp handkerchief and apply a hot, dry oven for 15 seconds. When the application is done, iron the handle pieces.



11. Sew handles: With right sides together, fold long edges of handle pieces together. Stitch long edge. Repeat with other handle.



12. Turn handles inside-out. There are a number of products you can use to do this.





13. Press the handle. You can stitch along the long edges of the handle, if desired. Stitch close to the edges, approximately 1/8" from the edge. Have your eye focus on the needle and edge of the fabric.



14. Sew bag: With right sides together, sew long sides of fabric. Press seams.

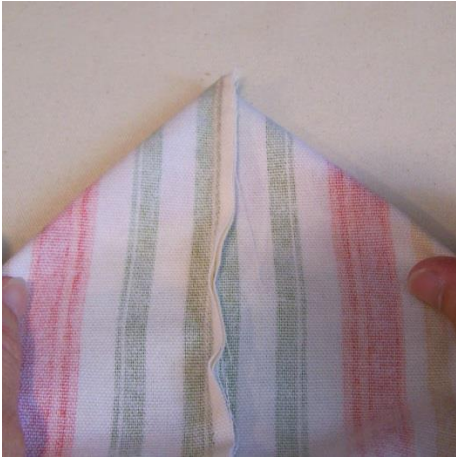


15. Tip: Pressing helps set your stitches and create a professional-looking seam. Use an up and down motion (not back and forth like ironing) to move along the length of the seam. Then press the seam to one side.

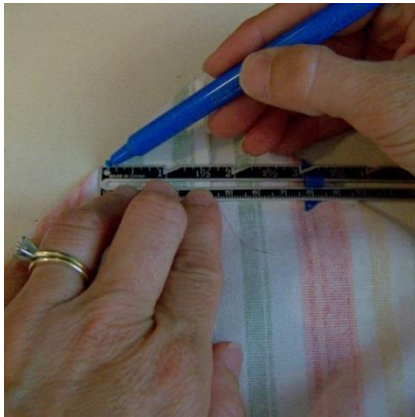
16. Repeat with contrast lining fabric.

17. Make a mock box bottom.

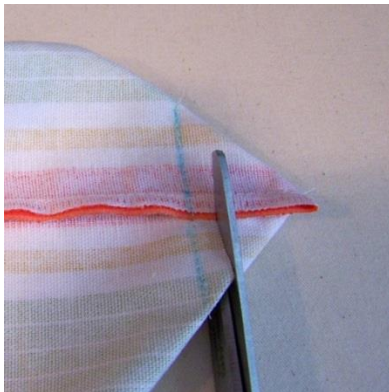
18. Pull the fabric so that the seam is in the center and a triangle forms at the bottom of the bag.



19. Find the point at which there are 3" across the base of the triangle and draw a line. Sew along this marked line.



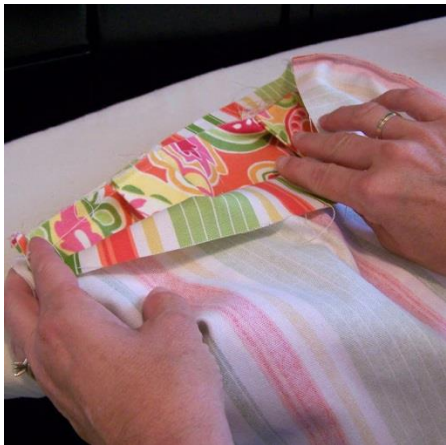
20. Trim the triangle about ¼" from sewn edge. Repeat on the remaining bottom corners of both bags.



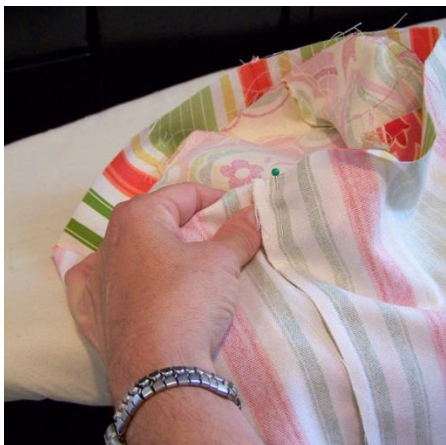
21. Pin handles to the bag front, right sides together, 3" from each edge. Stitch in place.



22. Insert bag with handles into the lining bag, right sides together.

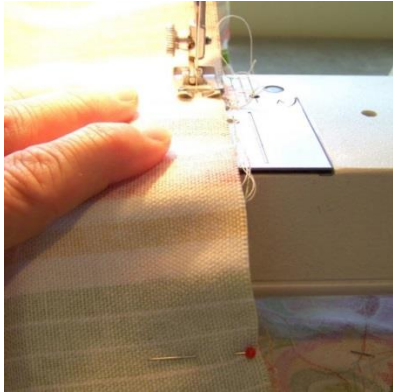


23. Start at the side seams and pin the fabric together around the top edge of the bag.





24. Stitch around the top of the bag, all layers together, leaving a 2-3" opening for turning. You can leave the opening where there is no handle. Start by back-stitching and then stitch around the circle.



25. Pull the lining fabric through the opening.



26. Push the lining fabric inside the main fabric.



27. Press around the entire top, pressing the seam allowances at the opening under. Pin the opening closed.



28. Top-stitch around the top edge. First stitch 1/8" from the edge and then repeat at 1/2" from the edge.



**Give the bag a final press and enjoy!**



## Adorable Hooded Baby Towel

[Melissa from I Still Love You](#)

This Adorable Hooded Baby Towel is a simple sewing project – and pretty cute. Whether you need baby craft projects for an upcoming shower or not, you'll probably want to make this for the sheer sweetness of it. Sewing projects for beginners like this one are a great chance to brush up on your sewing skills and make bath time for baby a lot more fun.



### Materials:

- One Bath Towel
- One Hand towel
- Scissors
- Ruler
- Pins
- Sewing Machine



Love baby sewing patterns?  
Check out [75+ Baby Sewing Patterns  
You'll Adore!](#)

**Instructions:**

1. Fold the hand towel in half lengthwise and cut 10 inches from finished edge.



2. Round the corner of the hoodie.



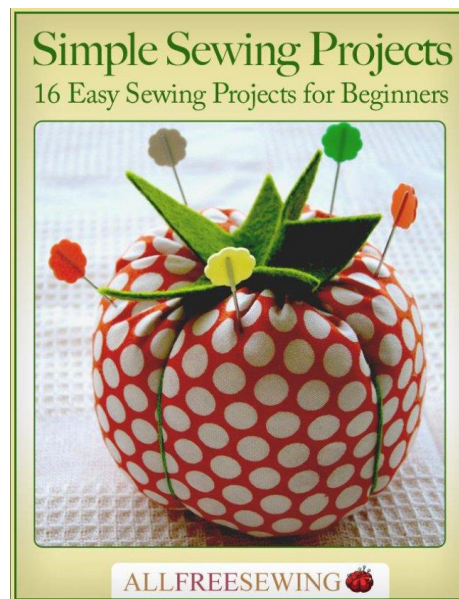
3. Pin right sides together.
4. Sew the cut edges.
5. Fold the bath towel in half widthwise.
6. Match the center of the bath towel to the seam of the hand towel.





7. Pin the right sides together and sew.

8. Give your little one a bath and enjoy!



See these and other quick and easy sewing projects in our eBook, [Simple Sewing Projects: 16 Easy Sewing Projects for Beginners](#).

**ALLFREESEWING**   
Free Patterns To Keep You In Stitches