

The Allie Dress



Test
Square

2" x 2"

Neck
Tie

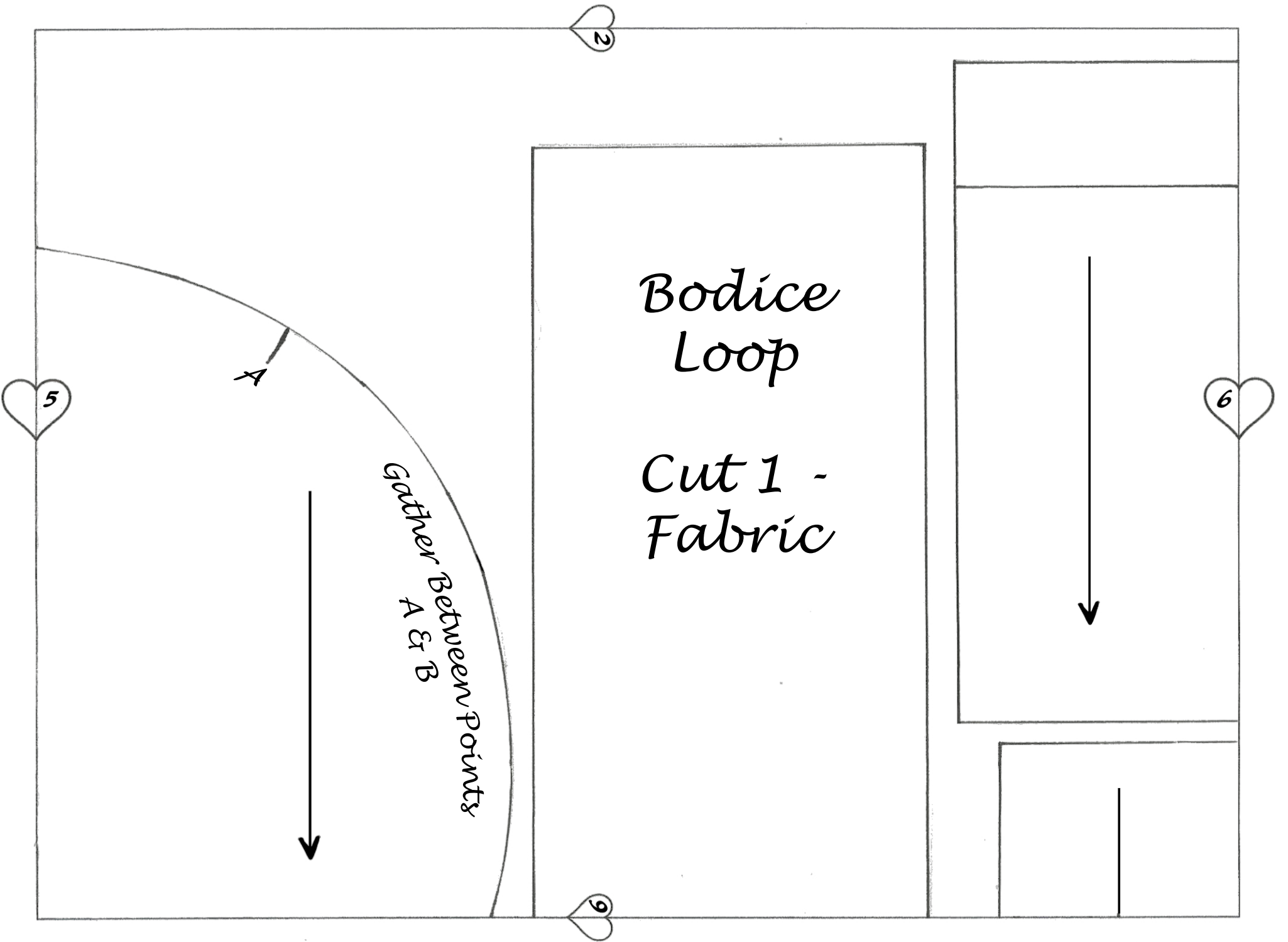
Bodice Front

Cut 2 - Fabric
Cut 2 - Lining

4

5

8



2

5

A

Gather Between Points
A & B



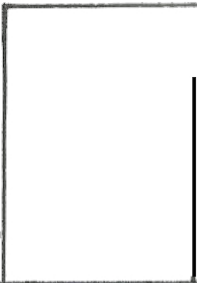
Bodice
Loop

Cut 1 -
Fabric

6



9





Fold Down To Encase Elastic

*Bodice Back - Centre
Shirred Panel*

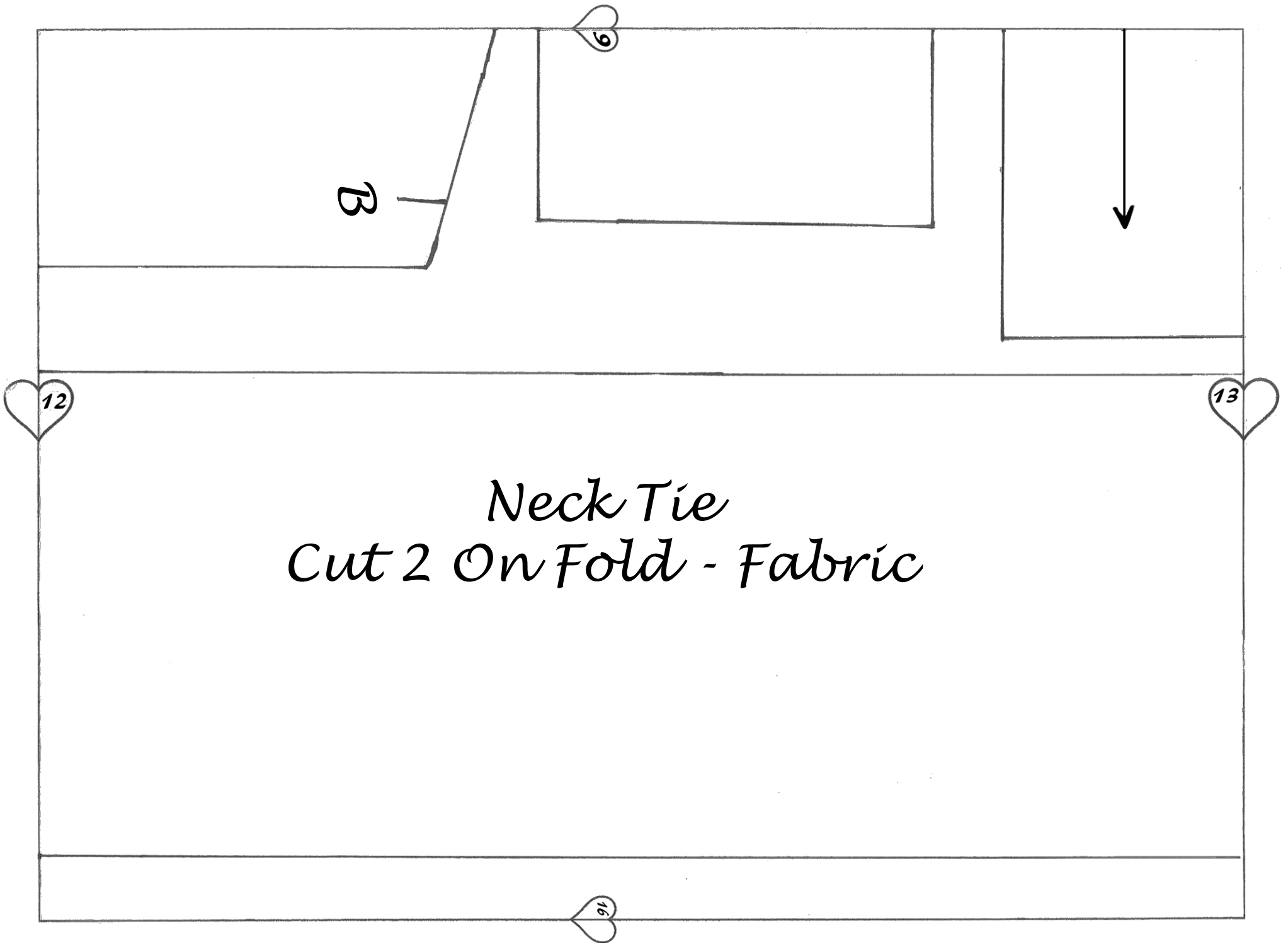
Cut 1 - Fabric



*Front Waistband
Cut 1 On fold - Fabric
Cut 1 On Fold - Lining*



place



Neck Tie
Cut 2 On Fold - Fabric

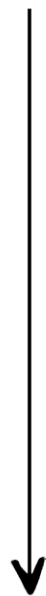
10

On Fold

13

Back Waistband

Cut 1 On Fold - Fabric
Cut 1 On Fold - Lining



Place On Fold

14

17

11

Bodice Side Back

Cut 2 - Fabric
Cut 2 - Lining



15

8

12

Place On Fold

